

The Coronado Trail

When Spanish explorer Francisco Vasquez de Coronado led his expedition across the Southwest in 1540, he followed a route that ran close by today's Highway 191 from Clifton to Alpine. Coronado came in search of the storied Seven Cities of Cibola (gold). Today's visitor finds a more enduring treasure along the scenic byway dubbed the "Coronado Trail" - mile after mile of untamed natural splendor.

The 123 miles of pavement between Springerville and Clifton feature 460 curves skirting the eastern edge of the Apache-Sitgreaves National Forests is called the Devil's Highway.

The Devil's Highway



Directions to the Coronado Trail



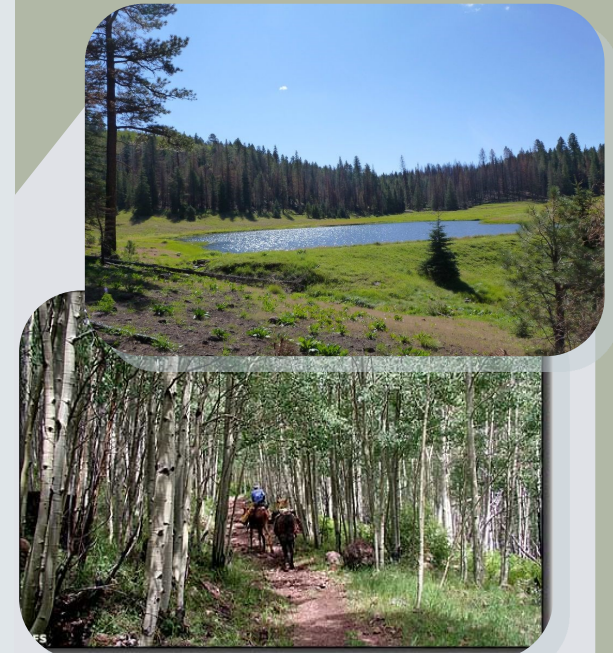
From US 191 between Mileposts 420 and 421, about six miles north of Alpine and 21 miles south of Springerville, turn east 4.6 miles on Forest Road 56 to Terry Flat Loop, then take the left fork 0.4 mile to the trailhead. Terry Flat Loop is a worthwhile destination in itself—the six-mile dirt road encircles Terry Flat Meadow with many fine views of Escudilla Mountain.

www.arizonahandbook.com/coronado_trail.htm

The Coronado Trail

Get ready for the scenic route of a lifetime... the Coronado Trail Scenic Byway

- ◇ Nelson Reservoir
- ◇ Escudilla Mountain Wilderness
- ◇ Terry Flat Loop
- ◇ The Devil's Highway
- ◇ Hannagan Meadow



Escudilla Wilderness

Nelson Reservoir

Driving out of the lush Round Valley where Springerville and Eagar nestle, is a beautiful stretch of highway with long, lazy bends through green forests and meadows. It curls along the edge of Nelson Reservoir, a shimmering lake lapping against grassy hills.

Rainbow, brown, and brook trout live in this 60-acre lake surrounded by a woodland of pinyon pine and juniper. It's just west of US 191, 11 miles north of Alpine and 10 miles south of Springerville. Restrooms, a paved boat ramp, and wheelchair accessible fishing station are provided at the north end; no fires or camping.



Escudilla Mountain & Wilderness



In 1540, Coronado spotted the 10,912-foot summit of this ancient volcano; perhaps a homesick member of his expedition named the mountain after an *escudilla*, a soup bowl used in his native Spain.

Escudilla Mountain is located in Apache County, Arizona, and is part of the White Mountains. The peak is approximately 3.5 miles from the Arizona-New Mexico border. The summit is the highest point in the Escudilla Wilderness which is administered as part of the Apache-Sitgreaves National Forest border.

Riding the Scenic Byway

U.S. Hwy. 191, "The Coronado Trail Scenic Byway" is a motorcycle riders' nirvana. It is an exciting 120 mile journey surrounded by the beauty and grandeur of Arizona. You will follow a route near Coronado's path as he searched for the "Seven Cities of Cibola" over 450 years ago. Literally you will travel from palms to pines while climbing over 6,000 feet in elevation in a couple of hours approaching the eastern edge of the two million acre Apache Sitgreaves National Forest.



In Clifton is this little narrow-gauge steam engine called "The Copper Head," which was one of the early ways of transporting copper from the mines to the smelter.